

Pressure Sensor Capabilities

# HYDROGEN



**AVERY**  
INSTRUMENT



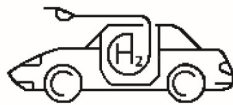
<http://www.averyinstrument.com>

ISO 9001:2015 certified quality system

# HYDROGEN

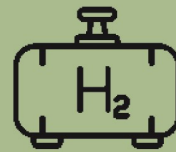
## Hydrogen-Powered Vehicles

Avery's hydrogen pressure sensor is an ideal choice for hydrogen-powered fuel cell vehicles. The sensors will be installed in vehicles for measuring tank pressure and the pressure of hydrogen before released to fuel cells. The sensing element is made of one-piece 316L material, and has passed all standards for hydrogen pressure cycles and burst pressure requirements.



## Hydrogen Storage Tank

In order for making hydrogen storage tanks smaller and creating a lighter, mobile system, high pressure is needed for compressing the volume of hydrogen occupied. Avery offers a wide range of hydrogen pressure sensors covering ultra-high pressure ranges which are common to hydrogen storage tanks.



## Hydrogen Filling Station

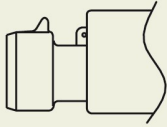


Avery's hydrogen pressure sensor is an ideal choice for use in hydrogen filling station, no matter at conventional type of station or warehouse using hydrogen-powered fork lifts. The sensors can serve the purpose to monitor storage tank pressure, compressor controls, as well as dispensing pressure.

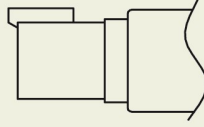


## Hydrogen Power

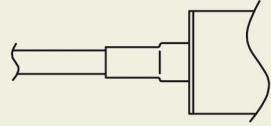
Nowadays hydrogen has become a viable and feasible solution to replace conventional fossil fuels for environmentally friendly power generation. In this regard Avery's sensors will typically be installed to measure the manifold pressure of hydrogen injection, as well as the pressure of on-site storage.



Packard Metripack 150

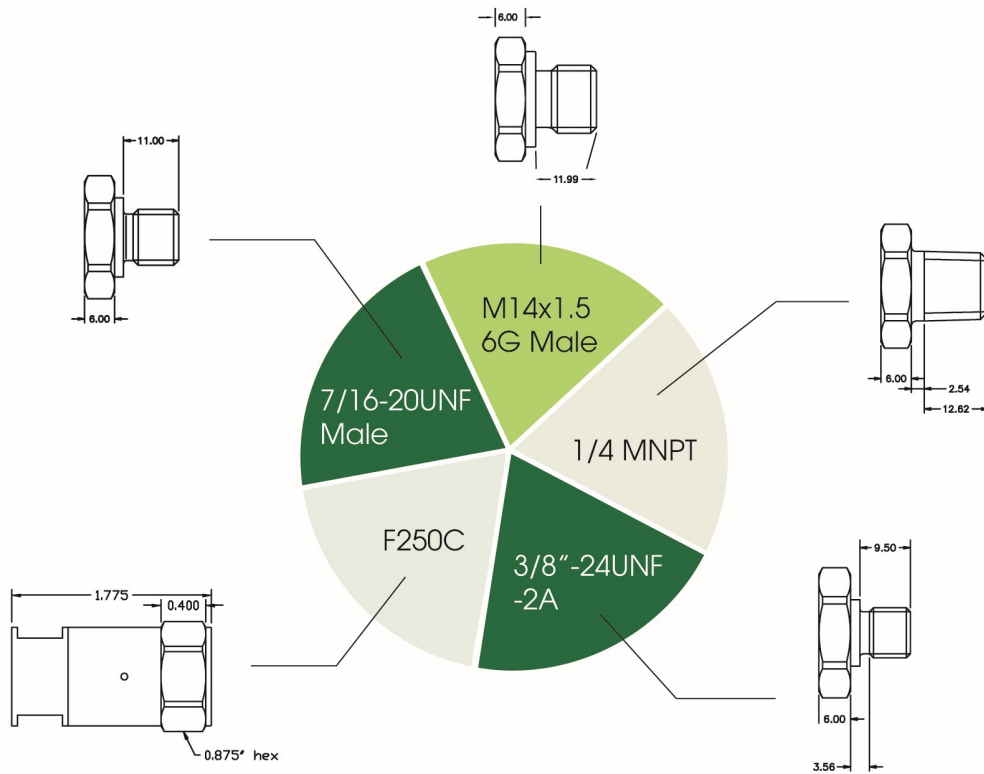


Deutsch DT04-4P

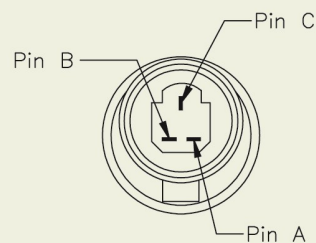


Cable

# SPECIFICATIONS



- ⊗ 10mV/V
- ⊗ 0-5V
- ⊗ 1-5V
- ⊗ 4-20mA
- ⊗ 0.5-4.5V Ratiometric (5V Supply)



CONNECTOR – FRONT VIEW



# About us

Established in 2013

Avery Instrument Limited is offering sensor products for high performance, harsh and extreme environments. The product lines include pressure sensors, transducers and related instruments to monitor pressure, differential pressure and liquid level.

We can offer competitive flexible solutions to meet your requirements. You will also see products from our range of sensor-based consumer products including tyre pressure gauges. If you are interested in our Pressure Sensor products and would like to know more please contact us at email: [info@averyinstrument.com](mailto:info@averyinstrument.com)

## I-GLAZ™



Main Office  
Unit 8, 23/F., Laurels Ind. Centre,  
32 Tai Yau St., San Po Kong, Kln., Hong Kong

Email: [info@averyinstrument.com](mailto:info@averyinstrument.com)  
Monday-Friday / 8:30am to 5:30pm

Contact  
Tel: (852)3743-0556

  
**AVERY**  
INSTRUMENT